

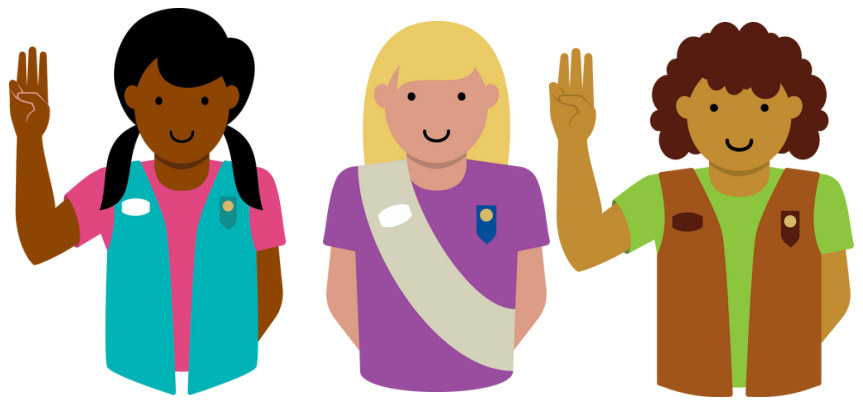
May

Patch of the Month

Pinwheels for Prevention

Earn your Pinwheels for Prevention patch by making your own pinwheels to plant in your community during the month of May.





About Patch of the Month

Looking for some additional fun activities for your troop or just to do on your own? Each month, girls can discover, connect, and Take Action in a specific subject area. Hands-on activities are available for all Girl Scout levels and can be done at meetings, as a pre-meeting activity, or as an at-home project.

Patch of the Month programs provide Girl Scouts an opportunity to enjoy a variety of activities while earning a fun patch. Patch programs are available to Girl Scouts of all grade levels. Completing patch programs can help complete a Journey and may satisfy requirements for certain badges. It's not necessary to complete the patch programs in the months specified—they can be completed at any time! All fun patches are placed on the back of the vest or sash.

Patch of the Month Evaluation

Once you have completed the program activities, please be sure to fill out the [Patch of the Month Evaluation](#).

How to Order Patches

Visit the GSK Shop in-person or use the GSK Shop Order Form by clicking [here](#) to purchase your patch for \$2.00 each!

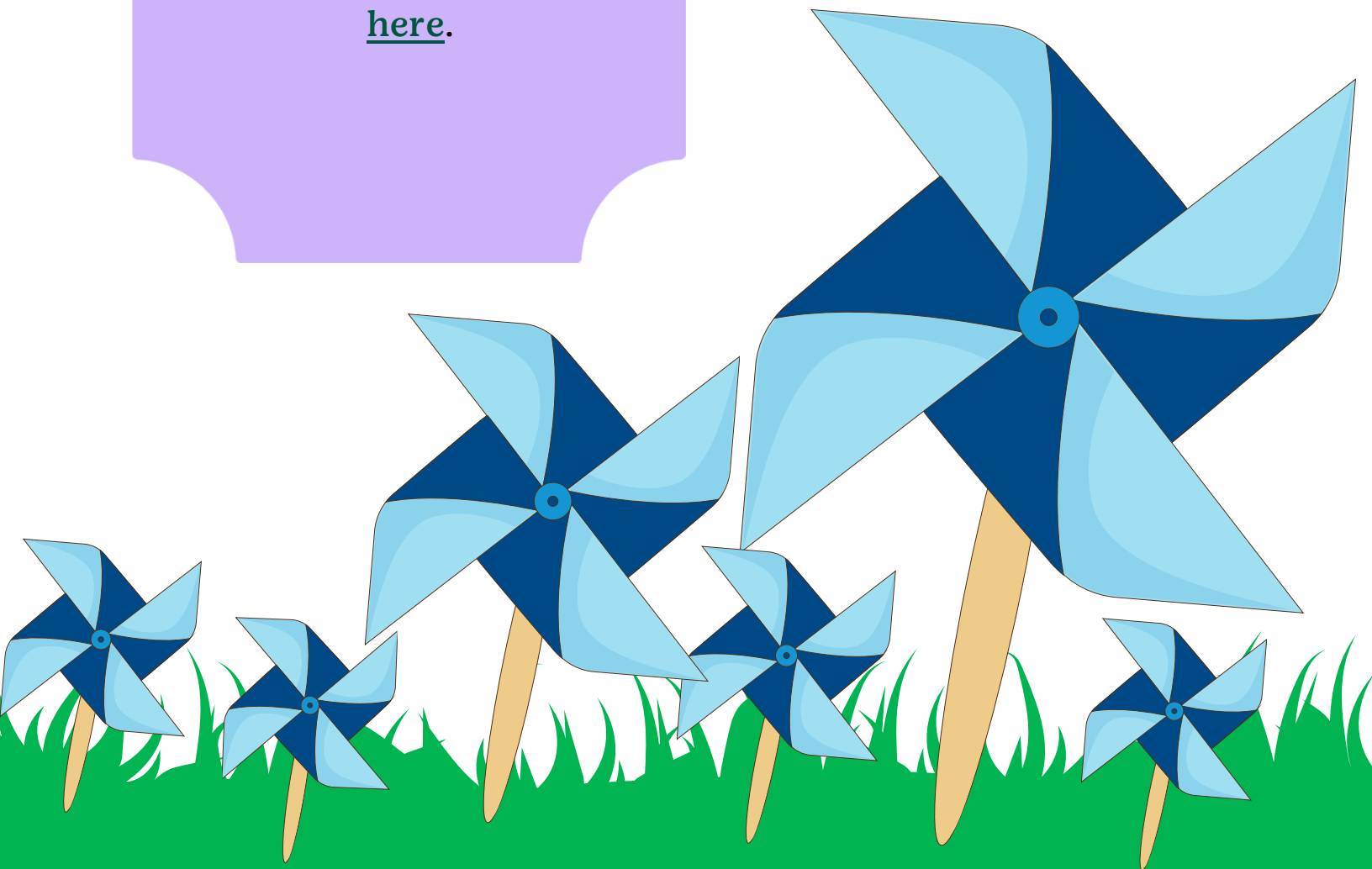


About Prevent Child Abuse Kentucky



Learn more about
Childhood Abuse
Prevention Month and
Pinwheels for Prevention
[here.](#)

Prevent Child Abuse Kentucky is a chapter of Prevent Child Abuse America. We are dedicated to the prevention of child abuse in all its forms and to ensuring that every child in the state of Kentucky has a happy, healthy childhood. Our mission is to prevent the abuse and neglect of Kentucky's children, and our goal with this program is to give Girl Scouts the opportunity to share public awareness through the planting of pinwheels, the national symbol for Prevent Child Abuse.



Directions

Step 1: Site Selection

Educate girls on the goal of the Pinwheel Gardens. Share the importance of the project and discuss various potential sites where pinwheels could be placed in their community. Set a plan with the girls for selecting and contacting a location, as well as what information to share with individuals at their chosen location. Site examples include local schools, banks, grocery stores, and churches.

STEP 2: Make Supplies

Learn how to make your pinwheels [here](#).

STEP 3: Site Visit

Create your site presentation (usually a verbal presentation) to share with the site that includes the goal and objective of the Pinwheel Garden. Visit the site and present.

STEP 4: Pinwheel Garden Agreement

Once a site has granted permission for a “planting” your pinwheels, work directly with their representative to set a time, date, and specific location for planting the garden. Be sure to include the details of site cleanup date. The goal is to have the gardens in place for a minimum of two weeks.

STEP 5: Pinwheel Planting

Plant your pinwheels at your site, then email a digital photo of your pinwheel garden to Prevent Child Abuse Kentucky at pcaky@pcaky.org.

STEP 6: Site Cleanup

Remove pinwheels on the agreed upon date.